

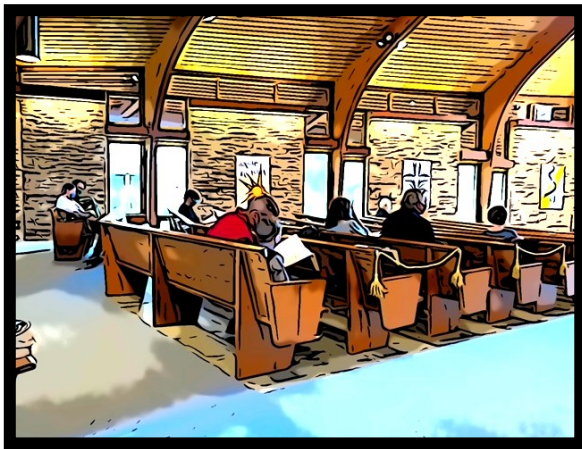
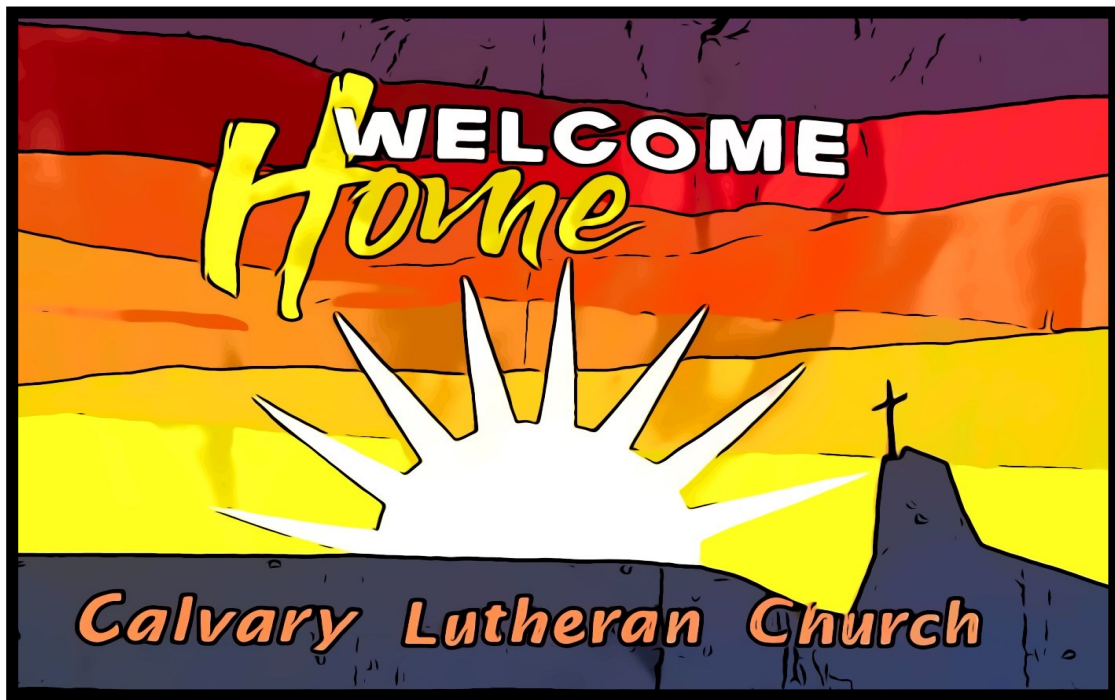
# Come and See



what's happening at  
**Calvary Lutheran Church**  
**Fall 2021**

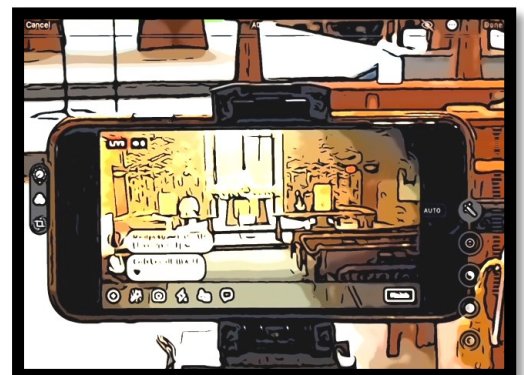
165 West Crescent Ave  
201-327-4786

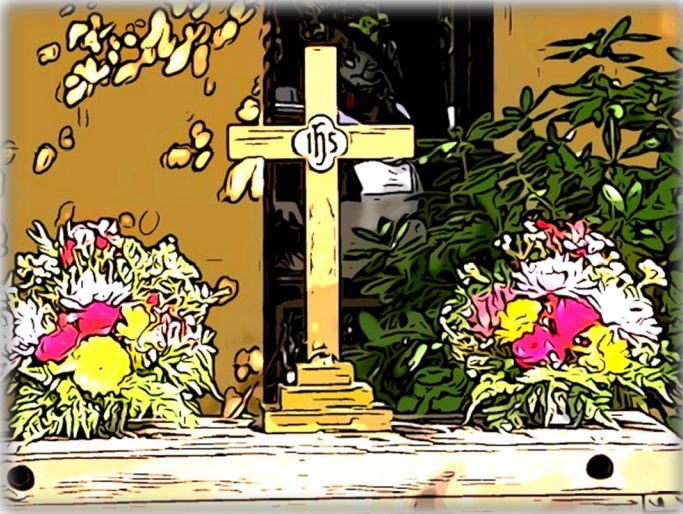
Allendale New Jersey  
<http://calvaryluth.org>



***Come to  
In-person Worship!  
new time: 10:30 AM  
beginning September 12***

*If you are not able to come  
and join us in-person,  
Calvary will continue to  
livestream and post on Facebook*





# **Outdoor Worship & Picnic**

**Come! Bring friends!**

**on September 26**

**10:30 Am**

**Join in fellowship and worship !**

**Picnic plans will be made  
according to Covid safety recommendations  
at the time.**

**Watch for an email closer to Sept 26!**



# Guest Worship Leaders Schedule

September

5 Rev. Plumstead

12 Kara Song

19 Kara Song

26 Kara Song



October

3 Rev. Bowman

10 Kara Song

17 Rev. Bowman

24 Kara Song

31 Rev. Bowman

## "DO THIS IN REMEMBRANCE OF ME."

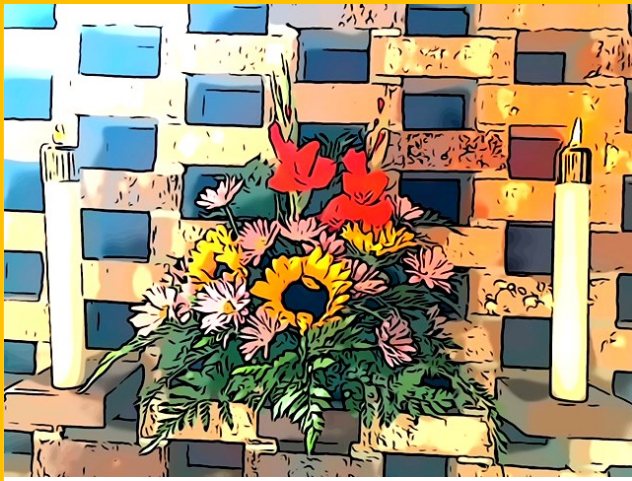


COME! CELEBRATE HOLY COMMUNION

OCTOBER 3RD

AND NOVEMBER 14TH

WITH SOCIAL DISTANCING OBSERVED



# Altar Flowers

The price is \$15.00 for each arrangement.

Checks payable to Kathy Peterson.

Please sign up on the flower chart in the narthex and indicate one or two bouquets and the occasion or person they are honoring.

**There are October & November dates available!**

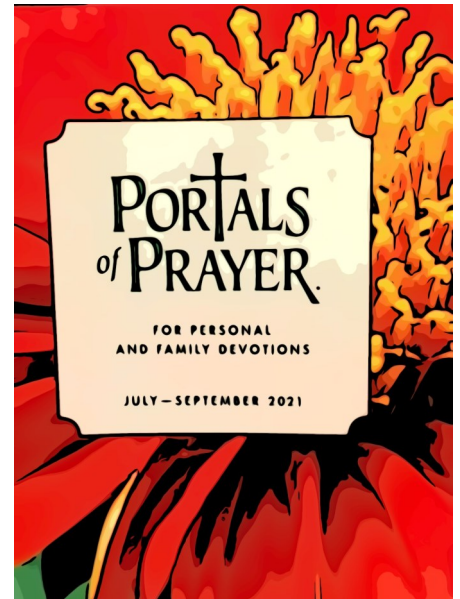
## Bible Study

Tuesdays: Sept 14, 28

October 12, 26

2:00-3:00

come for fellowship and discussion  
based on the daily devotion from  
Portals of Prayer and  
the upcoming week's  
scripture readings.



**COME & JOIN IN!**



## HELP for HAITI – IMMEDIATE RESPONSE NEEDED!!



Dear Friends,

Calvary has an on-going relationship with the people of **Haiti** through GT Water and Project Smile!

The pandemic has challenged our efforts but the recent 7.2 earthquake that has killed thousands and devastated the sw part of the island has called us back to **immediate action**.

GT Water is, again, bringing water filtration systems to Haiti and raising funds to help the people in whatever way possible. At this time, we have the opportunity to focus on the children who have no where to go and now wander amidst the rubble and all those young and older, who suffer due the nonexistence of basic hygiene products.

The items requested for the children are:

- uninflated soccer balls, sizes 4 and 5
- coloring books
- colored pencils (pencils only please because crayons melt)

In addition, the personal hygiene items needed are:

- toothbrushes (individually wrapped)
- Fluoride tooth paste (6oz or larger)
- soap bars – antibacterial (like Dial )

If you would like to donate but cannot shop, contact Lori McCue at [edwrdmcc1@aol](mailto:edwrdmcc1@aol).

If you would prefer to make a **cash donation**, please make the check out to **Calvary Lutheran Church** and add **“GT Water” to the memo line**. Carl Glaeser will see that all monies and items are delivered to those in need. If you have any questions about GT Water or our mission in Haiti and Honduras, contact Carl at [gtwater.project@gmail.com](mailto:gtwater.project@gmail.com) For those who are not familiar with GTWater, please visit their website at [www.gtwater.org](http://www.gtwater.org)

“We are using a Christin Mission Air Freight service AGAPE <https://www.agapeflights.com> to move our relief supplies directly to Les Cayes. Agape planes are met at the airport by the local GT Water Team and relief supplies are distributed to those most in need. As of Thursday August 19<sup>th</sup> GT Water has secured and shipped: 250 water filters, 500 water bucket faucets, 190 GT Water Smile Kits, and 64 Tarps, for a total over 32 cases of relief materials. But this is only the tip of the iceberg need.” (Carl Glaeser)

*The need is **GREAT** and the need is **NOW** so please consider donating as soon as possible. We will make our next shipment on **September 19**.*

*Checks can be sent to the church office and there are collection boxes for the requested item in the narthex.*

What else can we do to help our neighbors?



Please continue to support the **Center for Food Action** by donating canned goods, personal care and cleaning supplies, boxed goods, pet supplies, and baby supplies. The combination of the pandemic and the typical summer decrease in contributions has resulted in a severe shortage of essential supplies.



In addition to regular food and supplies, the **Center for Food Action** requests donations of school supplies. Calvary is now collecting **BACK-TO-SCHOOL** supplies until September 5.

- spiral bound notebooks
- loose-leaf paper
- pens
- pencils
- scissors
- erasers
- highlighters
- crayons
- backpacks
- pencil cases
- marble composition books
- 2-pocket folders
- post-it notes
- colored pencils
- 1" and 2" - 3-ring binders
- assignment pads
- red and green pens
- glue sticks
- rulers

Collection containers are in the narthex.

### BACK TO THE BEES . . .

Back in 2019, our Sunday school students – Ariana and James - began a very special project. Our students have raised enough money through their weekly offerings and with generous donations from congregation members to purchase and send 8 BEE kits from the *Heifer International Gifts Program*. Farm families in under-developed areas will be able to use and sell honey to feed their families, grow their farms and communities and eventually become self-sufficient. The cost of one BEE PACKAGE is \$30.00. Please look for the chart to see how our hive has grown. We will continue this project through the end of November. BEE PACKAGES will make a wonderful Christmas gift.



Coming this Fall –

Calvary will continue our support of the Angel Tree and Seafarers International programs. Look for notices in the bulletin re collection dates.

Please know that your contributions to truly make a difference. Thank you.

# MUSIC Ministry

JOIN OUR NEW  
Starting September 8th  
Wednesdays  
7:30-8:30



Join  
the Choir

new night: Wednesdays

new time: 6:30-7:30

new member: you?





## A NOTE FROM PEGGY SINGER:

If stewardship involves being a caretaker, then ALL of us are Stewards.

Calvary's stewardship committee helps remind our congregation of the needs of our church, both physical and spiritual.

If we see our church as a ship, stewards help steer, plot the course, stay on course, and help it to reach its destination.

Our mission statement provides us with a course and a destination, the stewardship committee reminds us that our time, talents, and our monthly donations keep our ship afloat and on course.

Come and bring your energy and resources this fall as we travel forward in this work to which God has called us ...

Amen!

---

### Zion's Fall Mum Sale 2021

Zion Lutheran Church is pleased to again offer their Fall Mum Sale. Orders are being accepted now through September 24th. The order form can be found on the Zion Saddle River website. Pick up is Saturday, October 2nd from 9:30-11:30 AM. Thank you all for your generosity and support. If you have any questions feel free to contact Zion church office. Lisa Raffaelli





 **KOINONIA** has reopened! Watch for news on upcoming weekend programs or visit the website!

You are invited to spend time at Koinonia where Christ unites us as brothers and sisters, where the beauty of unity with God, with one another and with nature will renew you!

# Accommodations

Koinonia's facilities can accommodate any number of guests, from a congregational retreat to small families or individuals.

Download the 2021 Accommodation Rates [HERE](#)  
[Register Online](#) and email or call to confirm availability  
 Email [register@koinoniany.org](mailto:register@koinoniany.org) or call (845) 456-0214 to plan your visit today!

|                                | Actual | Budget | Over(Under) |
|--------------------------------|--------|--------|-------------|
| Total offerings                | 27,581 | 37,172 | (9,591)     |
| Building and Parsonage rentals |        |        |             |
| and other Income               | 38,016 | 37,500 | 516         |
| Expenses                       | 49,008 | 60,971 | (11,963)    |
| Excess of Income over Expenses | 16,589 | 13,701 | 2,888       |





# Church Information



## CHURCH COUNCIL MEMBERS

|                 |                         |                           |
|-----------------|-------------------------|---------------------------|
| Bruce Heitman   | President               | bheitman@orchardsoft.com  |
| Jim Holland     | Vice President          | jholland@usa.com          |
| Gerry DelGatto  | Secretary               | jerseyd422@aol.com        |
| Mercedes Caes   | Treasurer               | mercedesbcaes@gmail.com   |
| Marilyn Agresta | Worship & Music liaison | marilynbabyrn@aol.com     |
| Alma Costello   | Caring liaison          | almamcostello@gmail.com   |
| Christina Metri | Outreach liaison        | metricl@hotmail.com       |
| Kristine Nooney | Education liaison       | knooney@verizon.net       |
| Tori Gooden     | Stewardship liaison     | gooden_victoria@yahoo.com |

**If you are in need of pastoral support,  
please contact:**

**Vice Pastor : Rev. Michael Linderman**

201- 675-4591

**Office Administrator: Anna Nooney**

**Office Phone** 201-327-4786

**Office E-Mail:** [office@calvaryluth.org](mailto:office@calvaryluth.org)

**Office Hours:** M,T, Th 10-2

**Website:** [www.calvaryluth.org](http://www.calvaryluth.org)

**Find us on Facebook**

## **MINISTERS AND WITNESSES :**

All the people of  
Calvary Lutheran Church

### **Music Director**

Elise Carter  
[longnote@msn.com](mailto:longnote@msn.com)

## **COMMITTEE CHAIRPERSONS**

### **CARING**

Laurie Jacober  
Janet Berger

### **CHRISTIAN EDUCATION**

Nancy Glaeser

### **OUTREACH**

Lori McCue

### **PROPERTY**

Mike Feeley,

### **STEWARDSHIP**

Marilyn Agresta

### **WORSHIP AND MUSIC**

Kathy Peterson